

Intrusion detection stars

Panoramic ceiling mount motion detector



5 years
warranty



- 3 separate and fully adjustable PIR sections for 360° coverage
- Instant response from the first step with First Step Processing technology
- Ease of installation due to hinged chassis and base plate
- High efficiency LED and light pipe system for easy walk testing



BOSCH

Panoramic ceiling mount motion detectors



3 separate and fully adjustable PIR sections for 360° coverage, delivered with a masking kit, to mask the coverage of specific areas if needed

Your solution for detecting intruders in areas where wall mount detectors face limitations. In buildings with an open floor plan or with many ground-level obstacles, vertical detection will give better results than horizontal detection. This includes scenarios such as warehouses, open offices with cubicles or convenience stores with shelves. The panoramic ceiling detector ensures a perfect overview and ultimate detection.

With a long history of patented, award winning performance in the field of intrusion alarm systems, you can rely on high-quality products. Using innovative processing technologies such as First Step Processing and Dynamic Temperature Compensation ensure rapid and reliable detection, while virtually eliminating false alarms.

TriTech detectors use a combination of PIR and microwave Doppler radar detection technologies with advanced signal processing. This advanced signal processing algorithm, intelligently analyzes motion for an almost instant response to intruders while knowing when to ignore false alarm triggers under a variety of environmental conditions.

Always discrete – in black & white

The detector is available in two colors, allowing it to be discreetly mounted on the ceiling.

Easy wiring

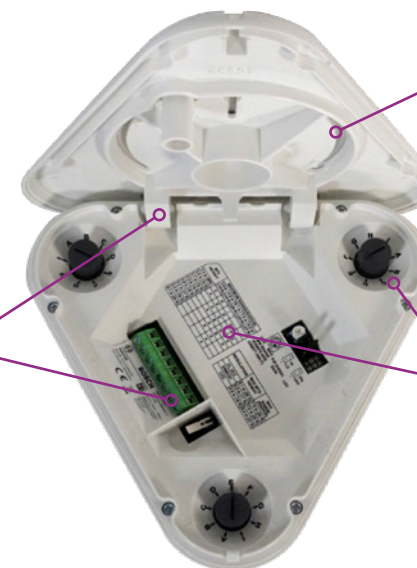
hinge chassis and base plate + 45° terminals for easy access

Easy installation

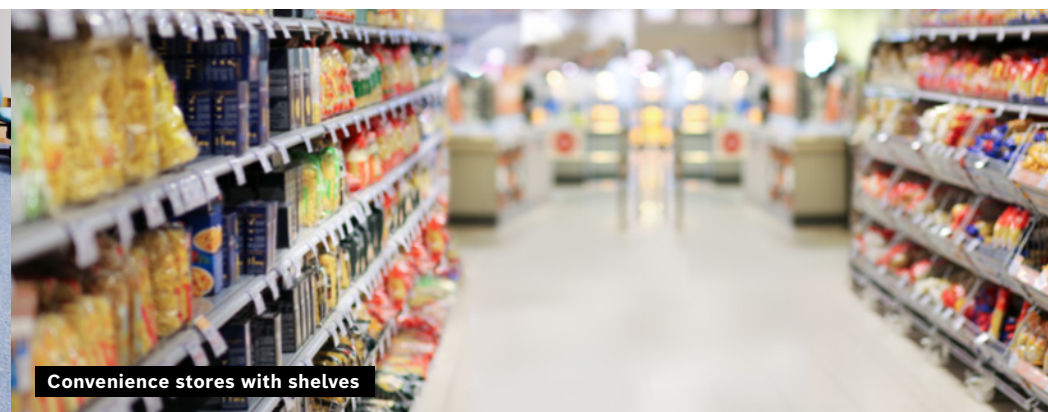
several mounting locations

Easy adjustment of the detection field

large dials + adjustment table



Offices with cubicles



Convenience stores with shelves


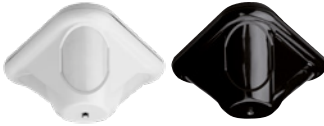



Warehouses



Panoramic ceiling mount motion detector

Specifications

Type	PIR	TriTech
Commercial Type Number	DS939	DS9370 (white) / DS9371 (black)
		
Application risk level	Moderate risk	Moderate risk with difficult environment
Coverage / range	Up to 46 ft / 14 m x 360°	Up to 46 ft / 14 m x 360°
Mounting height	8 to 20 ft / 2.4 to 6.1 m	8 to 20 ft / 2.4 to 6.1 m
First step processing	■	■
Dynamic temperature compensation	■	■
Microwave noise adaptive processing	-	■
Current draw	12 mA	12 mA
Certification	CE, UL, EN 50131-2-2	CE, UL, EN 50131-2-2
Warranty 	5 years	5 years

About our
Motion detectors



Learn more:
YouTube TechTalk



BOSCH