

**BOSCH**

Invented for life

## Integrated Security, Safety and Video Management Solution

### Live intervention

## Bosch Video Management System and Praesideo



The coupled system consists of a Bosch Video Management System server, one or more Bosch Praesideo Public Address systems and at least one operator client workstation.

- ▶ Live intervention through the Praesideo Public Address and Emergency Sound System from the Bosch Video Management System user interface
- ▶ Automatic or manual triggers
- ▶ Possibility to address specific zones

Having an area monitored by cameras does not allow the operator to actually intervene when an incident is happening. For that, he needs to dispatch a security guard. Unfortunately, it could take a while before the guard arrives at the location of the incident. Combining the Bosch Video Management System with the Bosch Praesideo Public Address system allows operators to trigger announcements from the user interface of the Bosch Video Management System. Furthermore, the Bosch Video Management System can also trigger announcements automatically, for example based on a Video Content Analysis alarm coming from a camera.

## Compatibility

### Bosch Security Systems

**Bosch Video Management System v6.5**  
**Bosch Praesideo Open Interface v4.3**



## Perimeter protection

When an object approaches the perimeter it will be detected by an IVA enabled camera. This can trigger an automated announcement or an alarm which requires response by the operator, who can then trigger a manual announcement.



## Remote monitoring

When an object is detected in the outside zone, an automated announcement will be triggered from the Bosch Video Management System. Only when the object continues to move to the inside zone the alarm will be sent to the external monitoring company, reducing costs for the end-user as less alarms will need to be processed by the monitoring center.

## Key features

### Bosch Video Management Script Engine

The Bosch Video Management System script engine allows customization of features and communication with other systems.

### Bosch Praesideo Open Interface

The Bosch Praesideo Open Interface allows it to be controlled by other systems.

### Bosch Video Management System alarm management

The Bosch Video Management System alarm management can be used to automatically trigger announcement using the scripting engine.

## Main benefits

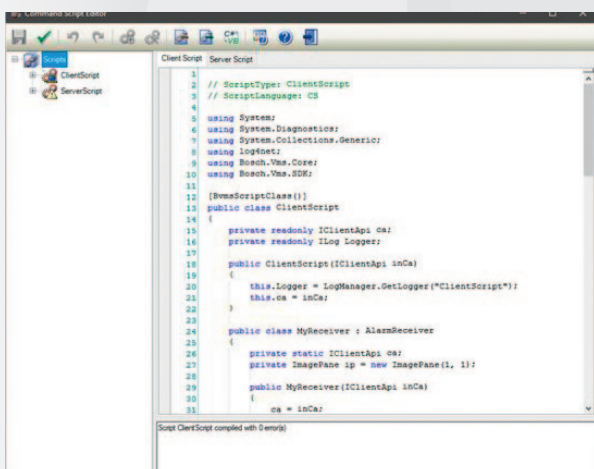
### Reduce costs

Reduce costs by forwarding alarms to the central monitoring company when objects move to the inside zones.

### Prevent incidents

Scare of potential offenders by making them aware that they are being actively monitored.

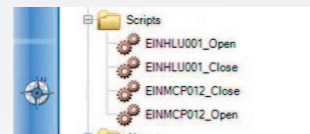
## How it works



The Bosch Video Management Script editor is used to create a script which connects to the Bosch Praesideo system. Connection values and zones are configured in the script. The script will be supplied by Bosch Security Systems on request.

Settings for 'Intrusion Detected'						
Device	Network	Trigger alarm	Log	Script	Script	Script
Name	Address	Schedule	Schedule	Script	Script	Schedule
AUTODOME IP 2000 Indoor (Sho.)	192.168.220.140	Never	Never	none	None	Never
AUTODOME IP 5000 HD IR (Roof)	192.168.220.175	Never	Never	none	None	Never
AUTODOME IP 800 HD IR (Roof)	192.168.220.50	Never	Never	none	None	Never
AUTODOME IP 8000 HD	192.168.220.151	Never	Never	none	None	Never
Camera 1 (192.168.220.61)	192.168.220.61	Never	Never	none	None	Never
Camera 2 (192.168.220.61)	192.168.220.61	Never	Never	none	None	Never
Camera 3 (192.168.220.61)	192.168.220.61	Never	Never	none	None	Never
Camera 4 (192.168.220.61)	192.168.220.61	Never	Never	none	None	Never
DIVION IP 5000 MP (Showroom)	192.168.220.123	Never	Never	none	None	Never

The Bosch Video Management System alarm management configuration allows to trigger an announcement by selecting a specific script as an action on an incoming alarm. This can be a Video Content Analysis alarm, but also an alarm coming from a third party system (for example Fence Detection).



The announcements can also be triggered manually by the operator by allowing the operator access to executing the scripts directly from the Bosch Video Management System Operator Client.

**The Bosch division Security Systems** is a leading global supplier of security, safety and communications products, solutions and services. Protecting lives, buildings and assets is our aim. The product portfolio includes video surveillance, intrusion detection, fire detection and voice evacuation systems as well as access control and management systems. Professional audio and conference systems for communication of voice, sound and music complete the range.

Bosch Security Systems develops and manufactures in its own plants across the world. Additional information can be accessed at **[www.boschsecurity.com](http://www.boschsecurity.com)**