

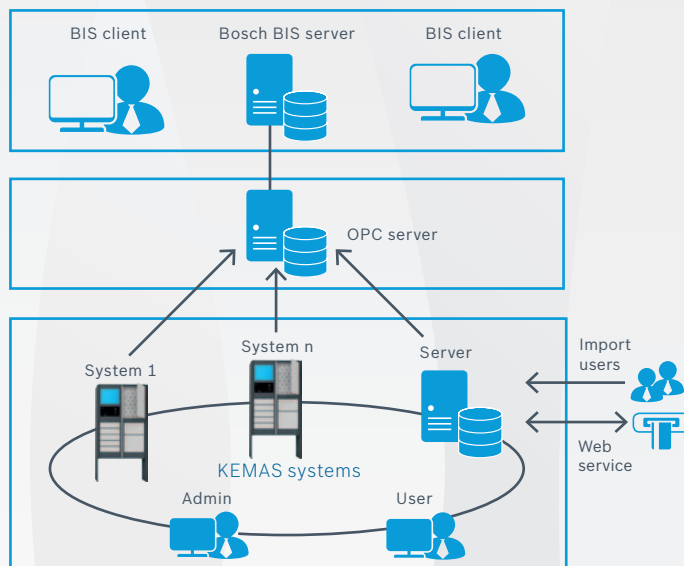
**BOSCH**

Invented for life

# Integrated Security and Access Control Solution

## Key and asset management

# Bosch Security Systems and KEMAS



- ▶ Secure and transparent key and asset management solution
- ▶ Clear authorizations for users of keys and assets in KEMAS software
- ▶ Integration of KEMAS into BIS via interface (OPC, webservice, other)
- ▶ BIS receives events from KEMAS (e.g. depot open, key not returned, break-up) to create alarms and start response actions
- ▶ Visualization of KEMAS systems, depots, assets and their status in BIS

**KEMAS**  
 Part of KEBA group.

KEMAS key and asset management is a powerful solution to enhance and strengthen the security of companies when it comes to the secure and transparent storage and handover of as well as the controlled access to keys and other assets.

The integration of KEMAS key and asset management into the Bosch Building Integration System (BIS) gives customers an integrated solution which reduces media discontinuation. Thus, it increases security and automation in day-to-day operations as well as efficiency and effectiveness.

Initially, personnel master data are imported into KEMAS software where authorizations for keys, assets, depots are assigned to users or user groups. Data are kept up-to-date automatically and on a regular basis.

Keys and other assets are connected with a RFID tag to make them identifiable inside their depot in order to display their status and possible alarms in BIS. Moreover, as users have to identify with an ID card (e.g. Bosch) at the depot system before issuing and returning a key both information are connected and result in a transparent documentation of usage.

An OPC interface visualizes the KEMAS systems in BIS together with information on system and depot status (e.g. key issued, key returned, correct key returned, depot open, breakup attempt). Webservice interfaces can be applied for further customising.

To prevent keys or assets from being removed from the premises by accident, we connect the KEMAS system solution with the leading access control system. When leaving the building or an area, the user ID card is used to check in parallel if the asset that has been removed is located in its depot. If this is not the case, the respective access control system is not unlocked.

## Compatibility

KEMAS	Bosch Security Systems
<b>All KEMAS systems with RFID-monitored assets/depots:</b> <b>Modular system</b> (drawer modules Keybox and Unibox, depot module, Storebox module) <b>Depot system</b> (security, prison, weapon) <b>Software</b> KEMAS NET / winkey NET	<b>Building Integration System 4.3 and newer</b>



Military



Airports & Railways



Financial Service Providers



Chemical or Pharmaceutical industry



Supply and disposal companies



Prisons and correctional facilities

## Key features

### Secure key and asset management

Keys and assets such as tools, laptops, weapons or radios are deposited securely inside intelligent depot systems.

### Access control

The assignment of access rights and the identification of users at the terminals ensure that only authorized persons can issue and return assets.

### RFID is the key

Asset identification via RFID guarantees an exact inventory overview and a clear association of users and assets in the transactions

### Electronic logbook

All transactions and events are logged continuously, are visualised in BIS and can trigger off follow-up actions

### Alarm management

Alarm notifications pop up in BIS (via OPC or webservice interface) with information on the status of KEMAS systems, depots or assets

### Scalability

KEMAS hardware and software is modular and scalable and can thus be extended according to customer's needs

## KEMAS depot systems for key and asset management



- ▶ Intelligent depot systems for safekeeping and interim storage ensure physical security of assets
- ▶ Identification of keys and other assets with KEMAS RFID tag inside depots for tracking
- ▶ Equipped with power back-up and emergency unlock
- ▶ Integration into BIS alarm management software for holistic solution
- ▶ Broad KEMAS product and solution portfolio guarantees flexibility and sustainability for customer

**The Bosch division Security Systems** is a leading global supplier of security, safety, and communications products, solutions and services. Protecting lives, buildings and assets is our aim. The product portfolio includes video surveillance, intrusion detection, fire detection and voice evacuation systems as well as access control and management systems. Professional audio and conference systems for communication of voice, sound and music complete the range. Bosch Security Systems develops and manufactures in its own plants across the world. Additional information can be accessed at [www.boschsecurity.com](http://www.boschsecurity.com)

The core competencies of **KEMAS** are RFID-based self-service solutions in all aspects of the transfer of assets (e.g. keys, ID badges, tools, laptops, radios, weapons, etc.). The solutions make it possible to record, administer, store, book, schedule and deliver assets, while providing simultaneous access control.

KEMAS solutions are based on mechatronic depot systems, intelligent administration and application software as well as identification technologies for persons and assets. The solutions are integrated into the existing infrastructure via interfaces.

Visit [www.ipp.boschsecurity.com](http://www.ipp.boschsecurity.com) for details on the Bosch Integration Partner Program

For more information, visit [www.kemas.de](http://www.kemas.de)